

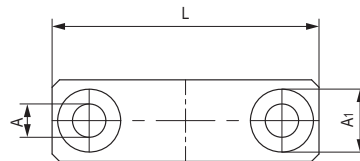
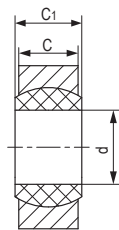
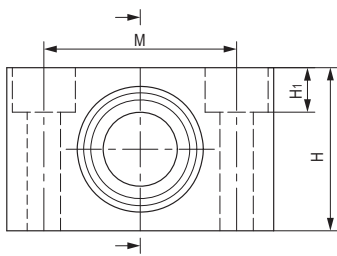
## GNB基座关节轴承，紧凑型 Pillow block spherical bearings, compact design



### 产品特性 Product features

- 球体采用高耐磨材料EPB15制成
  - 保持器采用硬质氧化镁铝合金制成
  - 干运行、免维护
  - 补偿中心误差
  - 高径向载荷并能承受边缘载荷
  - 重量轻、节约空间、易安装
- Spherical ball made of highly wear-resistant EPB15
  - Housing made of aluminum alloy with hard anodized surface
  - Maintenance-free, self lubricating
  - Compensation for alignment errors
  - High radial loads and compensation of edge loads
  - Very low weight and space saving
  - Easy installation

### 标准规格 Standard specifications



产品编码 Part No.:

**GNB-08**

内径 Inner diameter

产品编码 Part No.	d E10 [mm]	H [mm]	H <sub>1</sub> [mm]	A [mm]	M [mm]	A <sub>1</sub> [mm]	L [mm]	C [mm]	C <sub>1</sub> [mm]	最大静态抗拉强度 Max. axial static tensile strength		最大径向抗压强度 Max. radial compressive strength		最大轴向抗压 Max. axial strength		最大 扭力 Max. torque [Nm]	重量 Weight [g]
										短期 Short-term [N]	长期 Long-term [N]	短期 Short-term [N]	长期 Long-term [N]	短期 Short-term [N]	长期 Long-term [N]		
GNB-08	8	19	/	4.5	22	/	31	9	8	2500	1250	4300	2150	600	300	1.3	9
GNB-10	10	22	/	5.5	26	/	36	10	9	3400	1700	5300	2650	700	350	2.5	17
GNB-12	12	26	/	5.5	28	/	38	10	12	4600	2250	6500	3250	750	375	2.5	19
GNB-16	16	34	6.4	6.6	37	10.6	50	13	13	6700	3350	8500	4250	1100	550	4.5	30
GNB-20	20	40	8.6	9	46	14	62	16	16	8500	4250	11000	5750	1400	700	4.5	52
GNB-25	25	48	8.6	9	54	14	72	20	20	13500	6750	18500	9250	2300	1150	10.5	85
GNB-30	30	56	10.6	11	64	17	86	22	22	10000	5000	16500	8250	2500	1250	10.5	140